

PINE HILL CEMETERY ASSOCIATION, INC.

1530 E 39th St

DAVENPORT IOWA 52807

PHONE (563) 391-5130

EMAIL pinehillcemetery@yahoo.com

Website www.pinehillcemeterydavenport.com

“Caring for the Quad City Community”

Service for over 150 years

Not-For-Profit

Perpetual Care

Serving all Faiths

Single or family lots

Cremation lots

Cremation Columbarium

Grave liners or vaults

Monuments and markers

Pre-planning--with guaranteed price contracts

The Board of Directors and Management strive to make this a place of beauty and serenity, possessing a dignity befitting the important part it holds in the lives of the people of this community.

Grave Spaces

Grave spaces are sold as “Interment Rights”, the right to get buried within Pine Hill Cemetery in a designated spot. It is not a property purchase. Grave spaces are sold for the burial of the human race only. Grave spaces are sold for burial of one person with the following exceptions:

- 1. If two people are cremated, both may be buried in one traditional grave space. Only one headstone is permitted for identification. Headstone must include both names.*
- 2. If one person is cremated and the other is in a traditional casket, the urn may be placed into the casket prior to burial.*
- 3. Grave spaces in Cremation Garden are designated for single or companion burial.*
- 4. An interment right must be purchased for each person to be buried.*



Interment rights range from \$300.00 to \$575.00 per person. Prices are determined by location in cemetery. We have large areas to choose from, whether they are next to a tree, on a hill side or even flat areas.

Perpetual Care

Perpetual care is the maintenance of the cemetery grounds, buildings, roadways and trees. Perpetual care is included in the price of each interment right and columbarium space. It is not an extra charge. Twenty percent of each sale is deposited into an irrevocable trust fund. Only the interest from this account can be used for maintenance. Perpetual care does not include headstones of any kind

Interment Charges

Interment charges are for opening and closing of a grave space or columbarium space. Interment charges include the use of our Memorial Chapel for any funeral service. Interment charges are figured for weekday services and before 11:00 on Saturday. Additional charges of \$150.00 for Saturday. Interment charges are \$850.00 casket/vault, \$350.00 for cremation ground burial and \$125.00 for columbarium burial.

Vault Setting Fees

This fee is for receiving and handling the concrete vault or grave liner. We will accept delivery from any one as long as the cemetery regulations are met. The fee includes placing the casketed remains into the vault or grave liner, sealing the vault as needed and lowering into the grave.

Vault setting fee: \$100.00

Vault purchase options

All casket burials must use a minimum of a reinforced concrete grave liner, not a state law, but a cemetery rule. The purpose of requiring a minimum of a grave liner for burials is to prevent settling of the grave which keeps maintenance cost to a minimum. This can be purchased from Pine Hill Cemetery with or without a bottom for \$400.00. Compare this to \$700.00 at the funeral home.

Sealed vaults are purchased for personal choices and are not required by law or cemetery regulations. Prices start from \$980.00. Vault pictures and descriptions included in this packet.

Cremation Options

Traditional casket space will allow for 2 urns to be buried. This will allow a more traditional type headstone to be placed. Only one headstone allowed per traditional grave space. Recoverable urn required in these sections. Urn vaults are not required.

Columbarium

A columbarium is an above ground burial structure for cremation. Each niche will hold two urns depending on size. Overall cost is less than ground burial due to space, type of headstone and burial cost.

Scattering or Green Burial

An area within the Cremation Garden to accept scattering of remains, or if desired a green burial method, in which urns are not required. This will be incorporated within the landscape beds and will allow flower plantings. A bronze butterfly marker will create an identity for each person. See the Butterfly Cremation Garden.

Funeral Service Location Options

1. Memorial Chapel: In 2003 Pine Hill Cemetery built a Memorial Chapel for holding funeral services or committal services at the cemetery.



The chapel is located at the East edge of the cemetery, next to our main office.



Within the chapel building we have a room connected to the chapel for receiving the vault or grave liner. We place the casket into the vault or grave liner once the funeral service is complete. This is all done with inside privacy and out of the weather. Any

family member may witness the placement of the casket into the vault if desired. A restroom and sales office is also available within the building.

There are no extra charges for using the chapel.

2. Graveside tent option. We will place a tent, five chairs, a casket stand and have the vault or grave liner placed as near to the gravesite as possible. We reserve the right to restrict funeral service location based on conditions of weather, roadways and existing ground around grave site area.

Grave side tent option add \$200.00

3. Grave side without tent. We will place five chairs, a casket stand and have the vault or grave liner placed as near to the gravesite as possible. We reserve the right to restrict funeral service location based on conditions of weather, roadways and existing ground around grave site area.

Grave side no tent add \$100.00

If you need additional information, please let us know. All charges may be paid in advance to guarantee today's price.

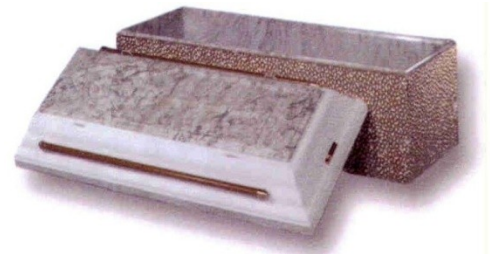


Grave liner or Vault. Why do I have to purchase one? What is the difference?

Grave liners and vaults are outer burial containers that the casket is placed into prior to burial. The main purpose is to support the weight of the earth around the casket to keep the grave from caving in over time. They are made of reinforced concrete.

What is the difference between a grave liner and vault? A grave liner is a reinforced concrete box with drainage holes in bottom and no seals of any kind. Its purpose is to support the earth around the casket. A vault is also a reinforced concrete box, but has additional polystyrene liners or metal liners inside the box and has butyl seals between the lid and box. They are designed to keep the elements away from the casket.

Why do I have to purchase an outer burial container? Pine Hill Cemetery, as well as most other cemeteries, requires a minimum of a grave liner. It is not a state or federal law. The purpose is to reduce the maintenance of the cemetery, which helps keep cost to a minimum. Purchasing a sealed vault is only personal choice.



Pine Hill Cemetery offers two choices of grave liners. In addition to the standard concrete box, another choice is one with a portion of the bottom removed to allow the casket to be in contact with the earth while still providing support around the casket. This option satisfies the needs of personal beliefs as well as the needs of the cemetery. Pine Hill Cemetery keeps grave liners on hand which helps keep cost to a minimum. We can pass the savings on to you by providing better prices than most funeral homes can.

Compare the grave liners and vaults to decide which one is right for you.



Grave liner

Minimum requirement for casket burial.

Available with out bottom, for personal belief of allowing casket to be in contact with the earth.

\$400.00 + tax



Monticello®

- Single-reinforced burial vault
- Concrete exterior with Strentex® plastic-reinforced cover and base

\$980.00 + TAX 34" \$1,100.00 + tax



Salute®

- Entry level single-reinforced burial vault
- Concrete exterior with Strentex® plastic-reinforced cover and base
- Exclusive Salute Emblem for veterans

\$995.00 + tax



Continental®

- Single-reinforced burial vault
- Durable concrete exterior with Strentex® plastic-reinforced cover and base

\$1,250.00 + tax 34" \$1,500.00 + tax



Venetian®

- Finest single-reinforced burial vault
- High-strength concrete with premium ABS Marbelon™ plastic-reinforced cover and base
- Rich look of polished marble
- Personalization choices available

\$1,200.00 + tax 34" \$1,600.00



SST Triune
 Cameo Rose® Triune®
 SST Triune Veteran

- Mid-line burial vault
- Cover and base reinforced with high-impact ABS plastic and strong, corrosion-resistant stainless steel

\$1,800.00 + tax Personalization available

Price List for Interment in Pine Hill Cemetery

Definitions set forth by the State of Iowa under code 523I regulating interment rights for cemeteries are as follows:

Interment rights mean the rights to place remains in a specific location for use as a final resting place or memorial.

Perpetual Care: To continue to operate as a perpetual care cemetery, a cemetery shall set aside and deposit in the care fund an amount equal to or greater than fifty dollars or twenty percent of the gross selling price received by the cemetery for each sale of interment rights, whichever is more.

Simply stated, this means that an interment right is purchased by each person, regardless of casket burial or cremation burial. An Interment right is not a purchase of a grave space. For each right of interment, 20% or a minimum of \$50.00 is to be deposited into an irrevocable trust fund established by the cemetery and regulated by the State of Iowa. The price of the interment right is determined by location in cemetery and type of interment (casket or cremation) desired.

Traditional Casket Areas, Ground Interment Casket and Cremation Combination

Full interment right price per person, discount for 2nd interment right on same grave location (cremation option only and purchased before any burial occurs).

Casket Interment

Interment right	\$475.00 to \$575.00
IA Fee	\$ 5.00
Interment	\$750.00
Vault Setting	\$100.00
Total	\$1,330 to 1,430.00

Options

Grave liner add	\$428.00
Sealed vault	\$1,048.00
Second Interment right Cremation only	\$250.00

Saturday service add	\$150.00
Pre-Need IA fee	\$ 20.00 per person

Outside tent service	\$200.00
Includes tent and 8 chairs	
No tent, just chairs	\$100.00

Cremation Options (casket areas)

Interment right	\$525.00 to \$575.00
Iowa Fee	\$ 5.00
Second Interment right	\$250.00
Cremation Interment	\$350.00 per person
Total	\$880.00 to \$930.00

Options

Urn vault	\$ 405.00
Saturday Service	\$ 150.00
Tent service	\$ 200.00

Columbarium

Columbarium Niche	\$500.00
IA fee	\$ 5.00
Interment	\$125.00
Bronze marker	\$468.00
Vase	\$50.00
Tax	\$ 36.26
Total	\$1,184.26

Urn options



Laminated Container #33-080

Cherry laminated with slide-off bottom.
10.25"h x 9.625"w x 4.125"d, 322 c.i.

Two will fit in our Columbarium

\$30.00 each

#33-060

This container is made of a plastic with a snap lid.
Container measures 8.5" x 6.5" x 4.5"

2 will fit in the columbarium

\$10.00 each



The Natural Earth Urn #30-N-210

The biodegradable Natural Earth Urn is suitable for water or "green" burials.

10.5" H x 7.5" Dia., 200 C.I.

\$140.00

The Natural Salt #30-N-200

The biodegradable Natural Salt is suitable for water or "green" burials.

10" H x 7.5" Dia., 200 C.I.

\$140.00





Full-Size Classic Gold Urn with Stripes #30-A-801L

A beautiful hand-crafted urn.
10.6" x 6", 200 c.i. Brass

\$160.00

Praying Hands Porcelain Urn #30-C-200

10" H x 7.75" W, 225 c.i.



Rose Porcelain Urn #30-C-300

10" H x 7.75" W, 225 c.i.

Your choice \$160.00

Life Portrait Porcelain Urn #30-C-400

Add a Life Portrait or stock image directly to our porcelain urn for lasting memories of your loved one.

10" x 7.75"

225 c.i.

\$160.00



The above urns, only one will fit per columbarium niche.

Pine Hill Cemetery Davenport Iowa (563)391-5130

Grave liner and Vault options

Concrete grave liner (regular or open bottom) \$400.00 + tax \$28.00 = \$428.00

Polylined sealed vault (Monticello/Oxford) \$979.44.00 + tax \$68.56 = \$1048.00

Other Vault options are available.

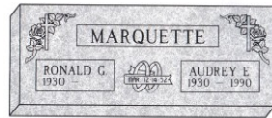
Headstones are not included in Interment Rights or Interment charges. Headstone styles vary by section of cemetery.



Columbarium

Headstones

Flat ground level



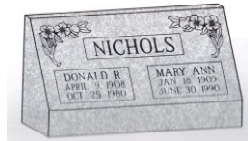
Individual \$572.00
Companion \$652.00



Sealed Vault

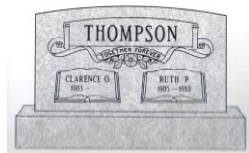
Wedge/Slant

Individual \$869.00
Companion \$1,106.00



Grave liner
Regular or open bottom

Monument



Individual or Companion \$1,086.00

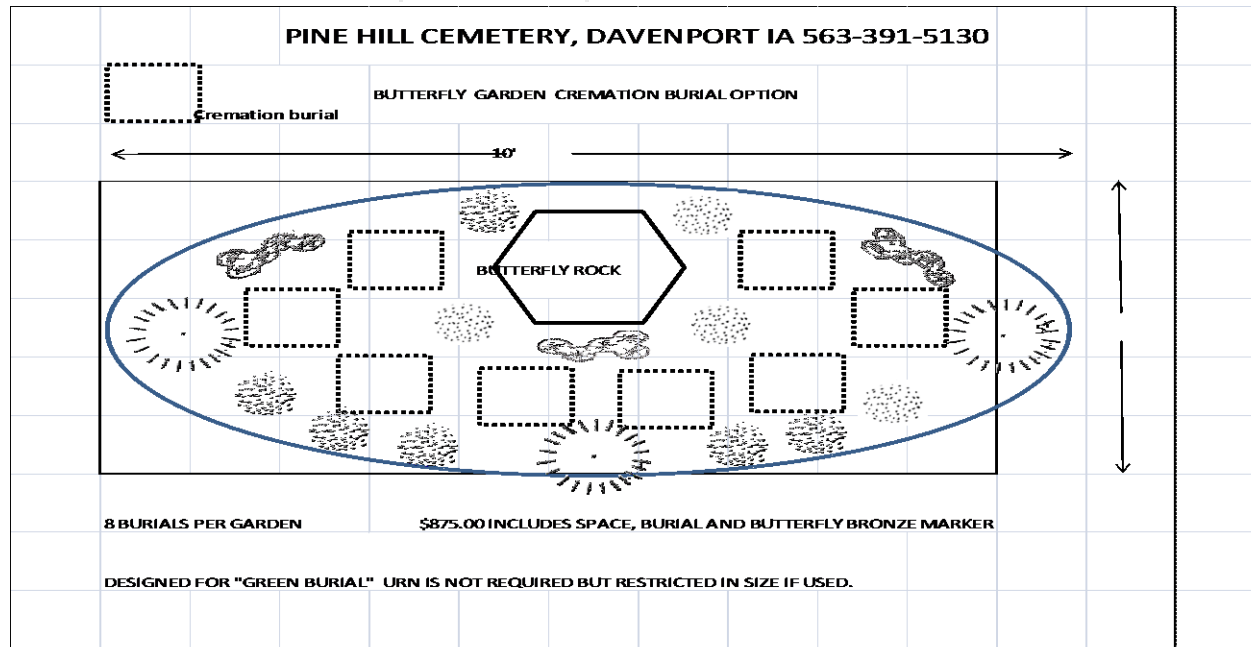


Urn Vault

Prices will vary based on actual size, style and color of headstone.
Tax and concrete base not included in price.

Butterfly Garden Cremation Burial option

Interment Right	\$250.00
Interment	\$250.00
Bronze Marker	\$375.00
Total	\$875.00



DECORATION POLICY

APRIL 5 THROUGH OCTOBER 1

- ALL DECORATIONS MUST BE IN A CONTAINER
- SHEPHERD HOOKS ARE PERMITTED
- WIRE STANDS AND GLASS CONTAINERS ARE PROHIBITED
- USE OF NAILS, SPIKES, WIRE ETC. TO ANCHOR DECORATIONS IS NOT ALLOWED

MEMORIAL DAY EXCEPTIONS

- ONE WEEK BEFORE AND ONE WEEK AFTER MEMORIAL DAY ANY DECORATION WILL BE PERMITTED.

OCTOBER 5 THROUGH APRIL 1

- WREATH STANDS ARE PERMITTED
- GRAVE BLANKETS MAY BE PLACED AFTER THANKSGIVING DAY

- DECORATIONS NOT MEETING THESE GUIDELINES WILL BE REMOVED
- ALL DECORATIONS ARE REMOVED APRIL 1 AND OCTOBER 1 EACH YEAR

PINE HILL CEMETERY, DAVENPORT IOWA 563-391-5130





PINE HILL CEMETERY ASSOCIATION

1530 E 39TH ST
DAVENPORT IA 52807
(563)-391-5130

A Non-Profit Cemetery Association
CARING FOR THE QUAD CITY COMMUNITY
www.pinehillcemeterydavenport.com

Please contact me; I am interested in the following information:

- Grave spaces, traditional (casket burial)*
 - Grave liner or Vault purchase*
 - Pre-payment of burial plan*
 - Headstones*
 - Visit in my home*
 - Memorial options*
 - Bench*
 - Tree*
 - Planter*
 - Cremation information*
 - Columbarium*
 - Ground burial*
 - Butterfly Cremation burial*
 - Urns*
 - Other*

Name _____ Phone _____

Address _____

City _____ State _____ Zip _____

Email _____

Please mail to Pine Hill Cemetery, 1530 E 39th St., Davenport Iowa 52807